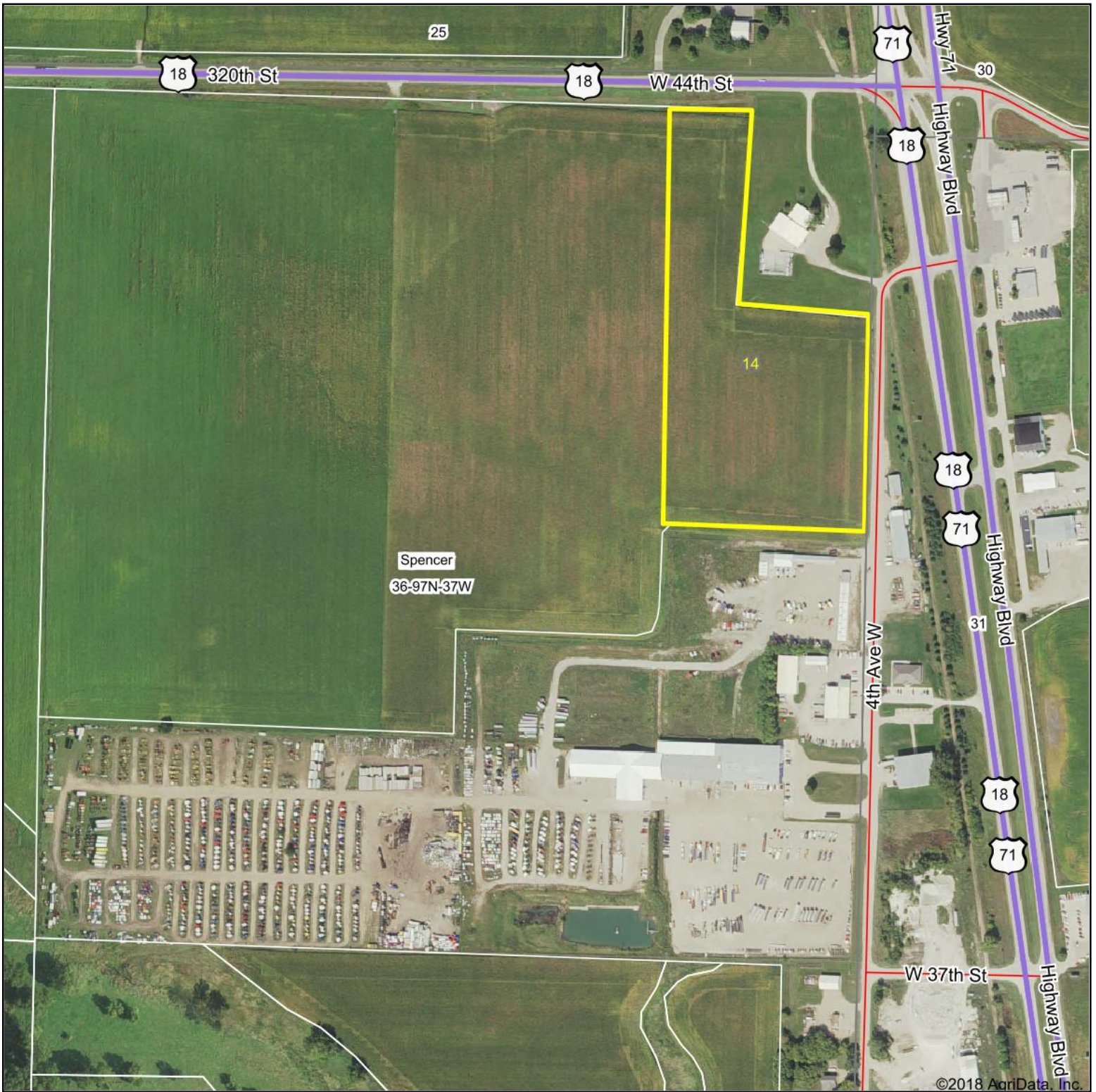
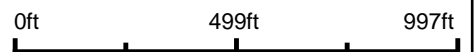


# Aerial Map



©2018 AgriData, Inc.

map center: 43° 10' 47.76, -95° 9' 16.07



Maps Provided By:  
  
CUSTOMIZED ONLINE MAPPING  
© AgriData, Inc. 2018 www.AgriDataInc.com

**36-97N-37W**  
**Clay County**  
**Iowa**

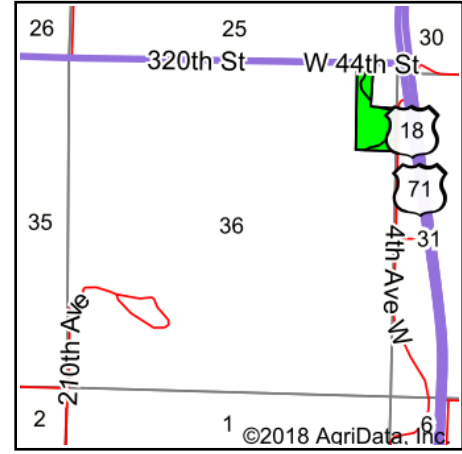


4/20/2018

# Soils Map



Soils data provided by USDA and NRCS.



State: **Iowa**  
 County: **Clay**  
 Location: **36-97N-37W**  
 Township: **Spencer**  
 Acres: **14**  
 Date: **4/20/2018**

Maps Provided By:



Area Symbol: IA041, Soil Area Version: 27

Code	Soil Description	Acres	Percent of field	CSR2 Legend	Non-Irr Class *c	CSR2**	CSR
1508	Belmann clay loam, 0 to 2 percent slopes	10.09	72.1%		llw	74	64
379B	Ocheyedan clay loam, lacustrine substratum, 2 to 5 percent slopes	2.96	21.1%		lle	87	62
375	Fostoria clay loam, lacustrine substratum, 1 to 3 percent slopes	0.95	6.8%		lle	83	70
<b>Weighted Average</b>						<b>77.4</b>	<b>64</b>

\*\*IA has updated the CSR values for each county to CSR2.

\*c: Using Capabilities Class Dominant Condition Aggregation Method

Soils data provided by USDA and NRCS.